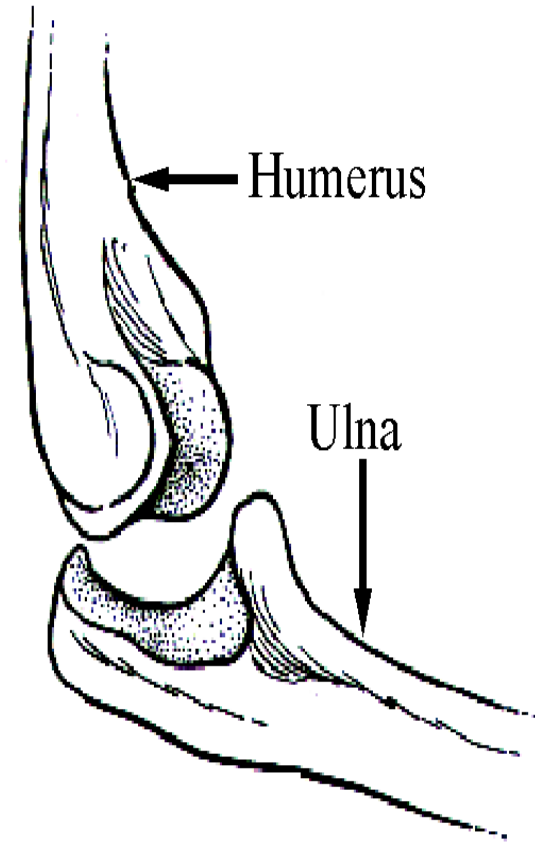


Skeletal and  
muscular  
system – exam  
questions

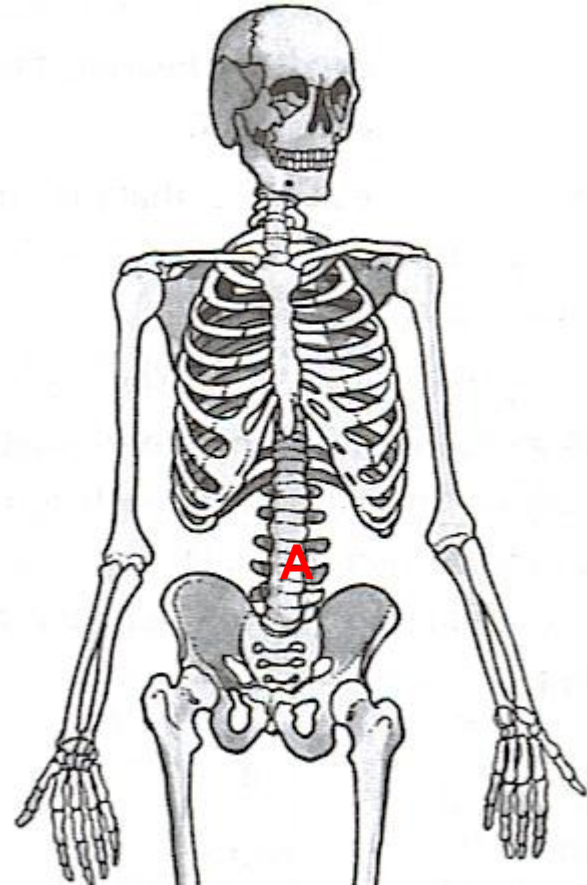
# 2012 - Higher

- Name the **type** of joint shown in the diagram.
- Describe the movements that this type of joint can make.
- Explain how muscles cause the movements of this joint.



# 2012 - Ordinary

- **Name** the bones labelled **A** in the diagram.
- Give one **function** of the skeleton in the human body.



# 2011 - Ordinary

- **Name** one organ protected by the ribcage.
- Give one other **function** of the skeleton.

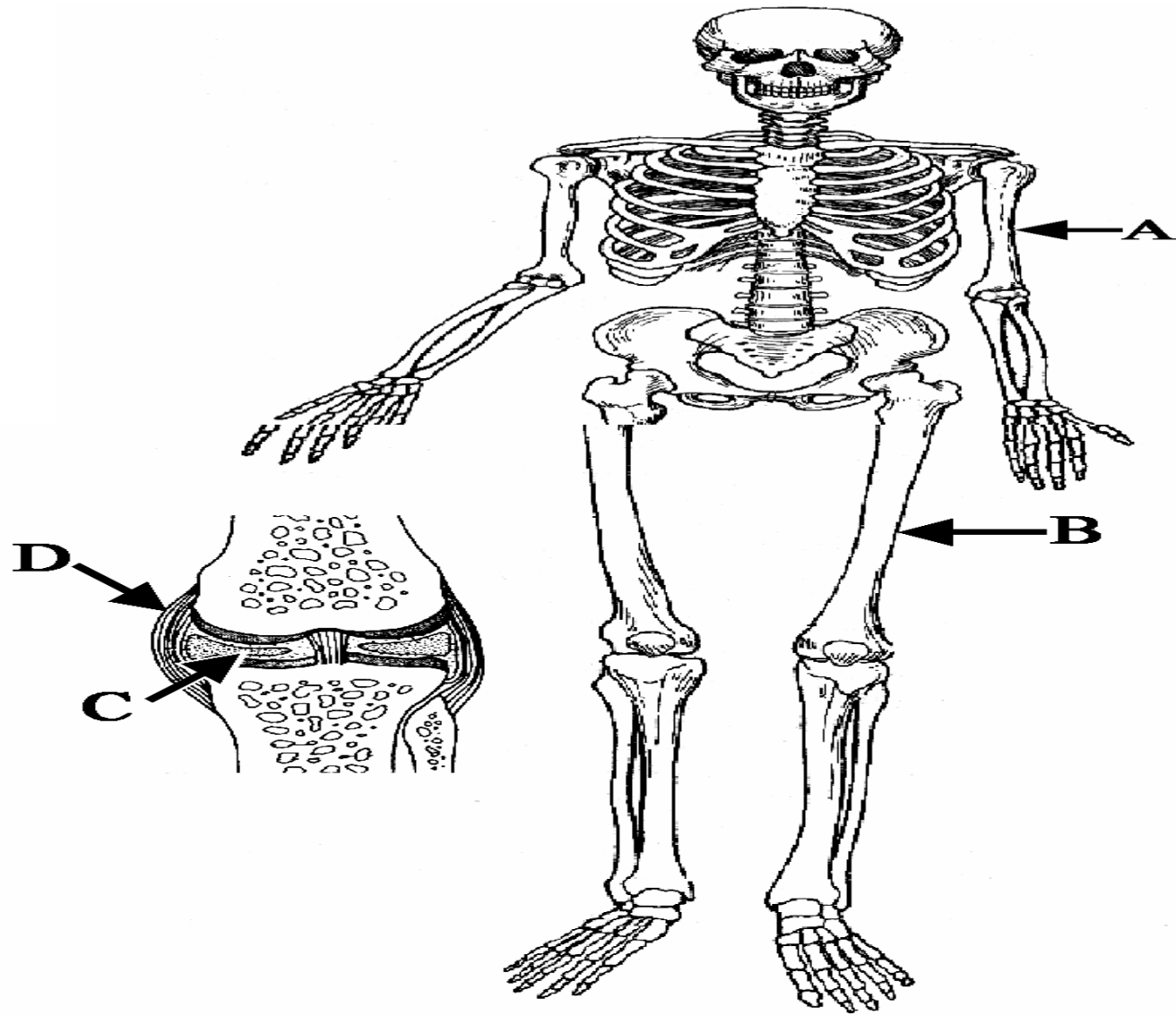


# 2010 - Higher

- Name **two organs** that the human skull protects.

## 2009 - Higher

- The diagram shows a human skeleton with a detailed drawing of the structure of the knee joint. The kneecap is not shown.
- Name the **bones** labelled **A** and **B**.
- **C** is synovial fluid. **D** is a ligament. Give the **functions** of the parts labelled **C** and **D** in the knee.

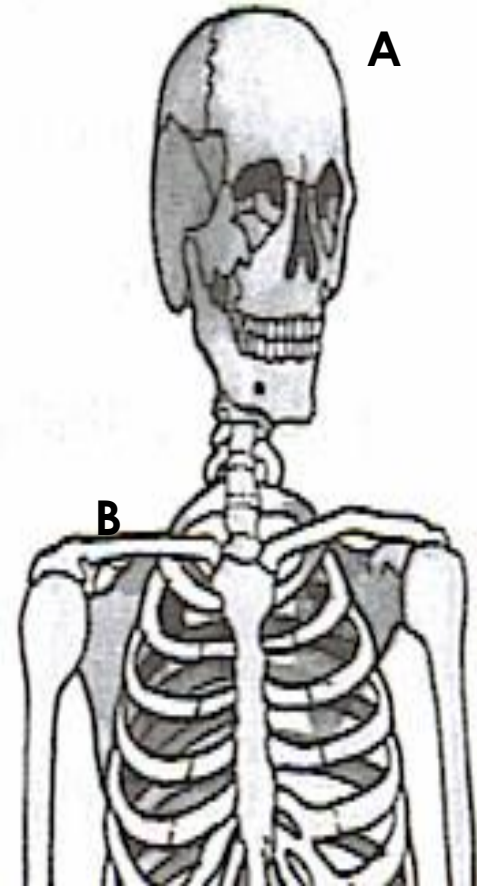


- Explain the ***action of antagonistic pairs of muscles*** in causing the ***movement*** of limbs. You may use a labelled diagram in your answer if you wish.



# 2009 - Ordinary

- **Name** the bones of the skeleton labelled **A** and **B** in the diagram.
- Give any two functions of the human skeleton.



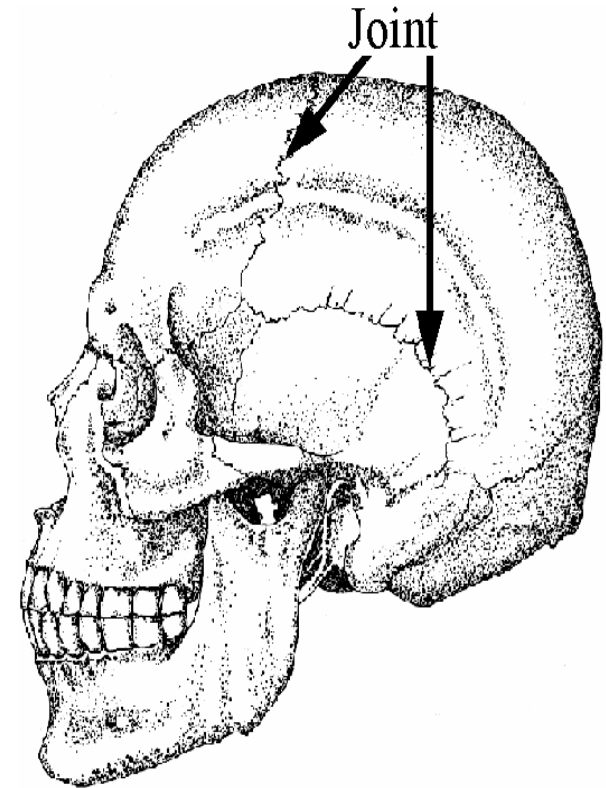
# 2008 - Ordinary

- In the table write the letter **P** beside the organ which is protected by the pelvis.
- In the table write the letter **S** beside the organ which is protected by the skull.
- In the table write the letter **R** beside the organ which is protected by the ribs.
- Give **one** other function of the skeleton, other than protection.

	<b>Lungs</b>
	Brain
	Kidneys

# 2007 - Higher

- Name the **type of joint** labelled in the diagram of the human skull.
- How does this type of joint **differ** from other types of joints found in our bodies?



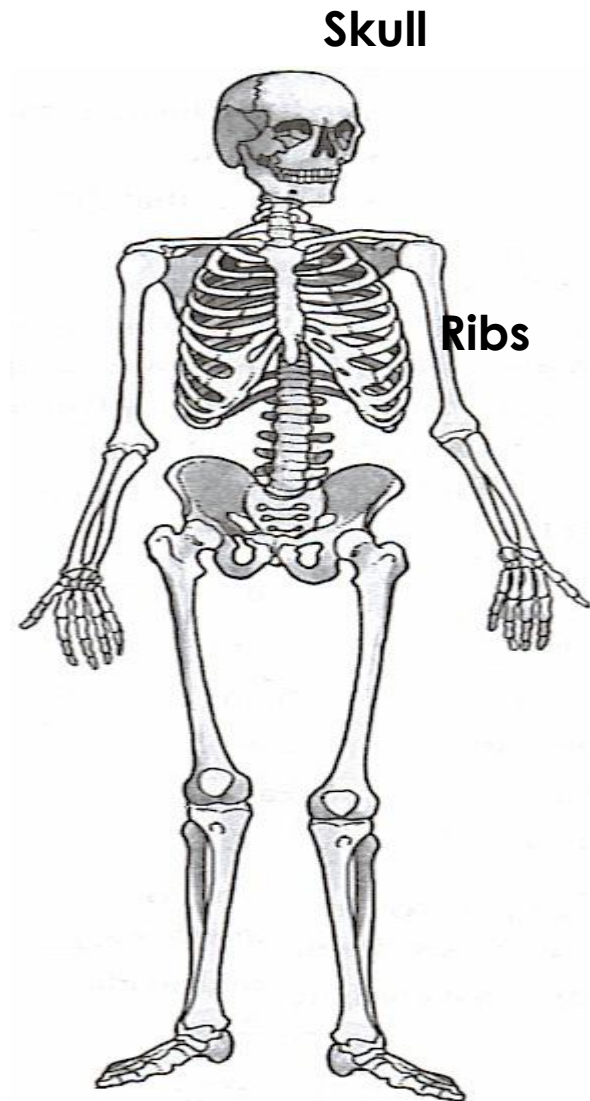
## 2007 - Ordinary

- In the table below place the letter **S** beside the name of an **organ protected by the skull**.
- Write the letter **R** beside the name of an **organ protected by the ribs**.

# 2007 - Ordinary

- In the table below place the letter S beside the name of an organ protected by the skull.
- Write the letter R beside the name of an organ protected by the ribs.

	<b>Brain</b>
	Heart
	Stomach
	Kidney



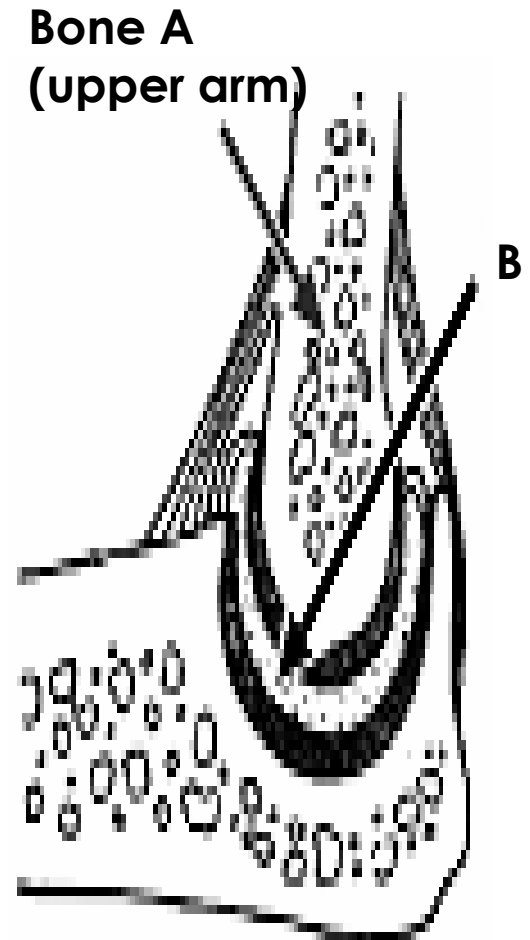
# 2007 - Ordinary

- The \_\_\_\_\_ **detects light.**
- The \_\_\_\_\_ is a human **organ of excretion.**
- The structure formed where **two bones meet** is called a \_\_\_\_\_.
- The tissue that **causes movement** of joined bones is called \_\_\_\_\_.

EYE  
JOINT  
KIDNEY  
MUSCLE

## 2006 - Higher

- Name **bone A** and identify the **type** of moveable **joint B**.



# 2006 - Ordinary

- o **Name** the bone of the human skeleton labelled **A** in the diagram on the right.
- o **Name** an organ that is protected by the skull.

